



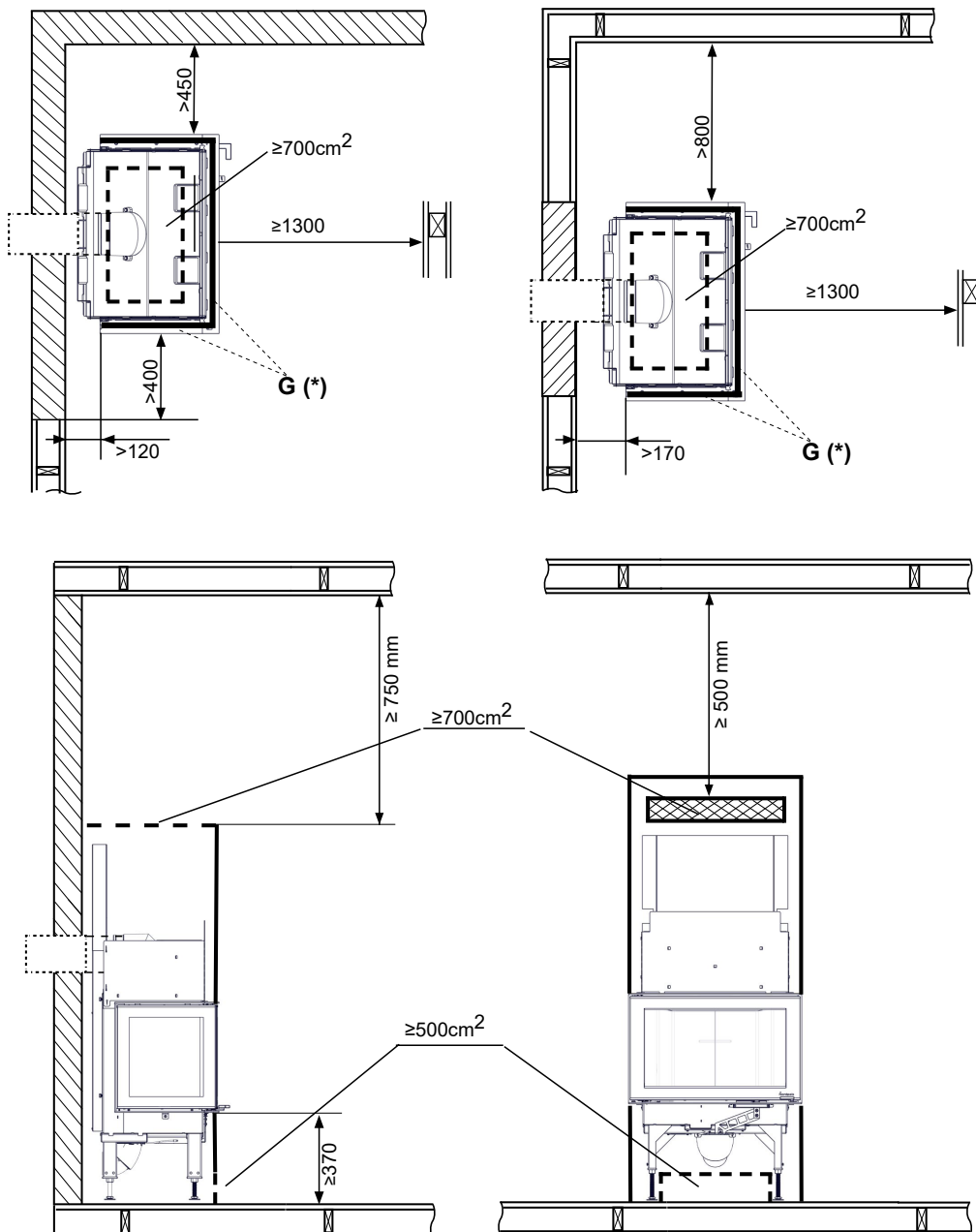
Safety distances

N-29U

 Nordpeis

FIG 1 = MM

-  =Firewall/ Hitzenschutzwand / Mur parfeu / Parete non combustibile / Palomuri
 =Combustible material / Brennbares Material / Matières combustibles/ Parete combustibile / Tulenarka materiaali
(*) **G** = glass side / glassidan / sivulasit /





Safety distances

N-29U

 Nordpeis

FIG 2 = MM

 =Firewall/ Hitzenschutzwand / Mur parfeu / Parete non combustibile / Palomuuri
 =Combustible material / Brennbares Material / Matières combustibles/ Parete combustibile / Tulenarka materiaali

